

Fluency

- 1** Colour according to the colour code.

Blue = Number bonds to 10
Red = Number bonds to 20
Green = Number bonds to 15

$5 + 5$	$12 + 3$	$3 + 7$
$11 + 4$	$7 + 3$	$9 + 1$
$6 + 7$	$10 + 0$	$10 + 10$
$8 + 2$	$18 + 2$	$6 + 14$
$6 + 9$	$2 + 8$	$13 + 7$
$15 + 5$	$11 + 9$	$0 + 10$
$17 + 3$	$8 + 7$	$4 + 6$

Word Problem

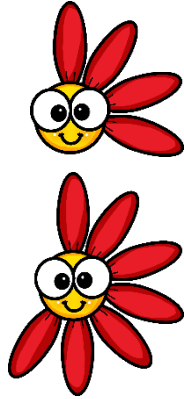
- 5** Fill in the fact family for the flower petals. The first one has been done for you.

$$7 + 4 = 12$$

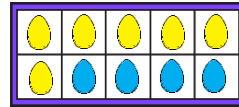
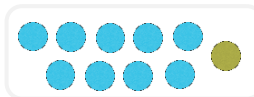
$$\underline{\quad\quad} + \underline{\quad\quad} = \underline{\quad\quad}$$

$$\underline{\quad\quad} - \underline{\quad\quad} = \underline{\quad\quad}$$

$$\underline{\quad\quad} - \underline{\quad\quad} = \underline{\quad\quad}$$



- 6** Tick the image below that could help solve $6 + 4$.



Reasoning

- 7** Jim and Harry are working out the answer of $9 + 2 = \underline{\quad\quad} - 2$.

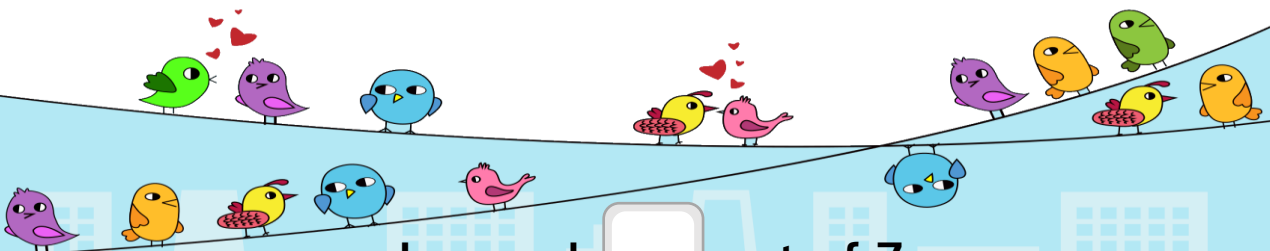
Jim says, The answer is 11.



Harry says, The answer is 13.



Who is correct? Explain your answer



I scored out of 7