

## Fluency

**1** Use the words below to complete the sentences.

quarter turn                      half turn  
three-quarter turn              full turn

A. The candle has taken \_\_\_\_\_ turn clockwise .



B. The cat has taken \_\_\_\_\_ turn anticlockwise .



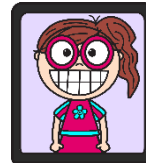
C. The cat has taken \_\_\_\_\_ turn clockwise .



## Word Problem

**5** Zoe pressed a button on her game that turned her puzzle piece anticlockwise.

Before turn

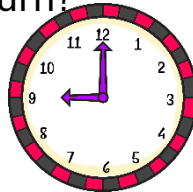


After turn



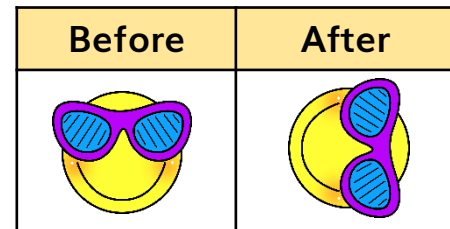
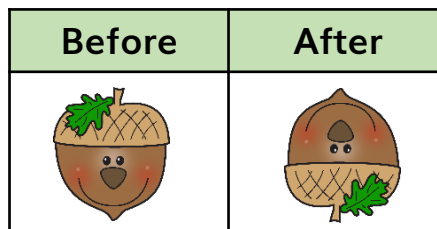
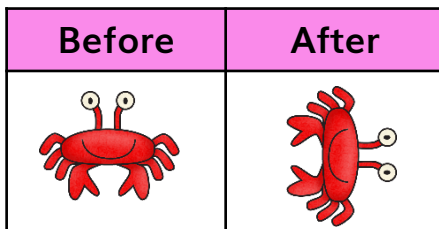
What turn could make the puzzle piece facing this direction?

**6** The big hand of the clock is pointing to 12. What number will it point to when it has made a half turn?

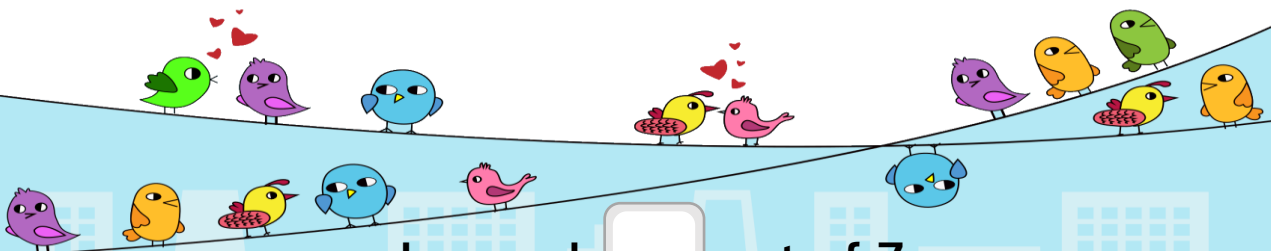


## Reasoning

**7** Tick the odd one out.



How do you know?



I scored  out of 7