

Fluency

Look at the instruction and draw the shape accordingly.

- 1 Draw the shape after half turn clockwise.



- 2 Draw the shape after quarter turn anticlockwise.



- 3 Draw the shape after full turn clockwise.



- 4 Draw the shape after three-quarter turn anticlockwise.



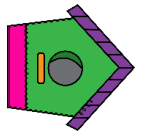
Word Problem

- 5 Zack is facing the sun.



He makes a half turn anticlockwise. Circle the object he is facing now.

- 6 The bird house has taken a three-quarter turn clockwise. What would the house look like before it took the turn?



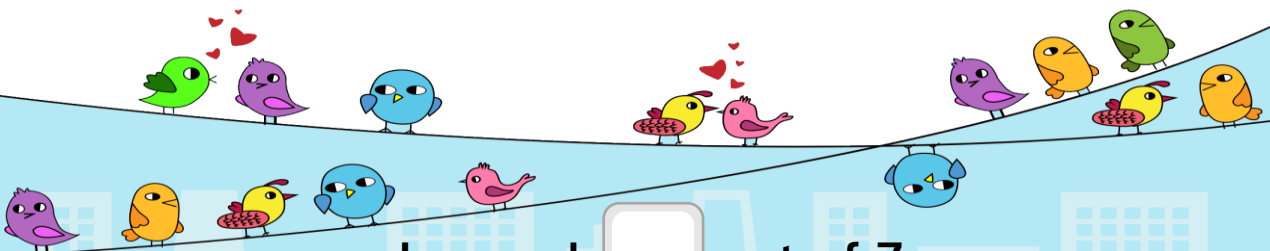
Reasoning

- 7 Ben says,



If the minute hand takes quarter turn clockwise the minute hand will be on 6.

True or false?



I scored out of 7