




## Fluency

Draw what each shape will look like once it has turned a:

1 half turn clockwise. 

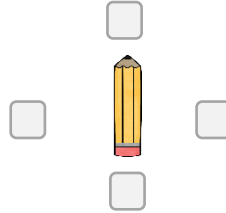
2 quarter turn anticlockwise. 

3 three-quarter turn clockwise. 

4 full turn anticlockwise. 

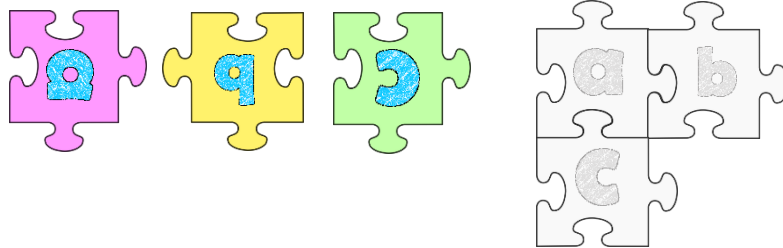
## Word Problem

5 The pencil is facing this way.



If the pencil takes half turn clockwise. Tick which way the pencil will be facing.

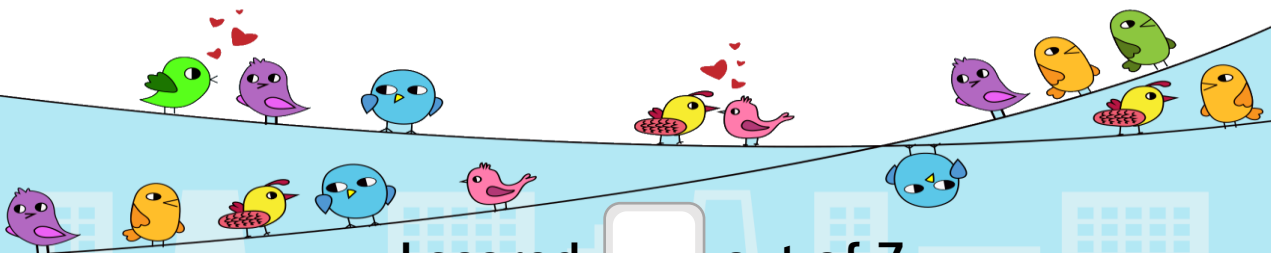
6 Ava is solving alphabet puzzle. Can you tell what turn all puzzle piece should make to fit in the puzzle board?



## Reasoning

7 Jane says that 2 quarter turns are equal to a half turn.

Do you think Jane is correct? Explain why.



I scored  out of 7