

## Fluency

Match the times to the clock.

1



8 o'clock

2



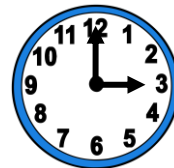
3 o'clock

3



4 o'clock

4

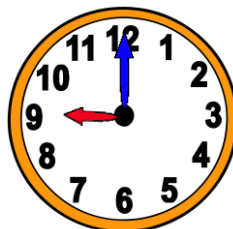


11 o'clock

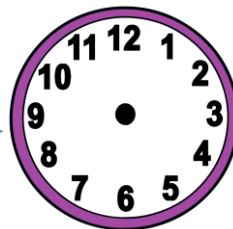
## Word Problem

5

The clock shows nine o'clock. Draw hands on the clock to show the time after one hour. Write the time in words.



After one hour



6

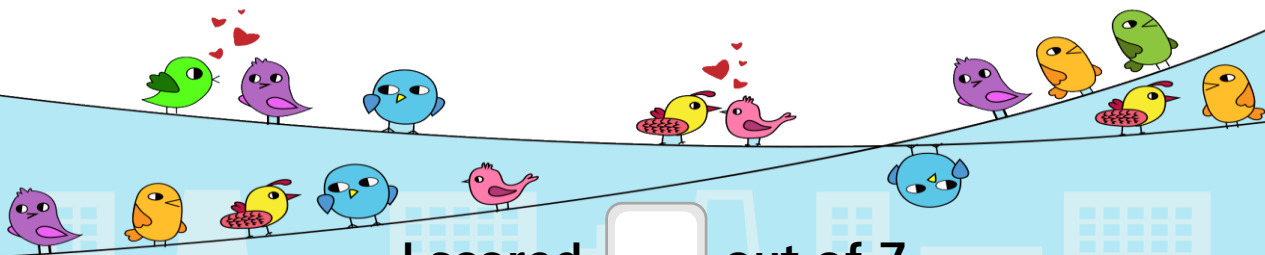
Jane wakes up at 6 o'clock. Today, she woke up one hour early. What time did Jane wake up?

## Reasoning

7

Tim takes his dinner at 9 o'clock.

Spot the mistake.



I scored  out of 7