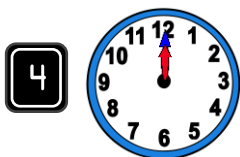
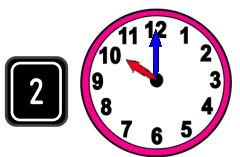


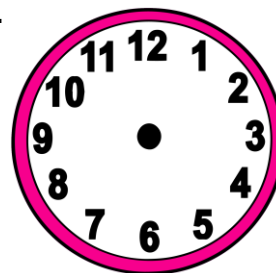
Fluency

Write the time shown on each clock in words



Word Problem

- 5 Jill takes one hour to complete her homework. It's 5 o'clock right now. Draw the hands on the clock to show the time when Jill will finish her homework.



- 6 Jane's Karate class started at 11 o'clock. It will finish in one hour. What time will her class finish?

Reasoning

- 7 Jane says "My clock shows 12 o'clock".

Explain her mistake.

