

Fluency

Match the times to the clock.

1



Half past 11

2



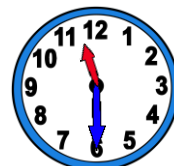
Half past 1

3



Half past 4

4

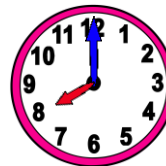


Half past 7

Word Problem

5

Cricket match starts at this time.



Read the clock and then write the time.

6

Jane takes her dog for a walk at 9 o'clock. Today, she is half an hour late. What time will she take her dog for a walk?



Reasoning

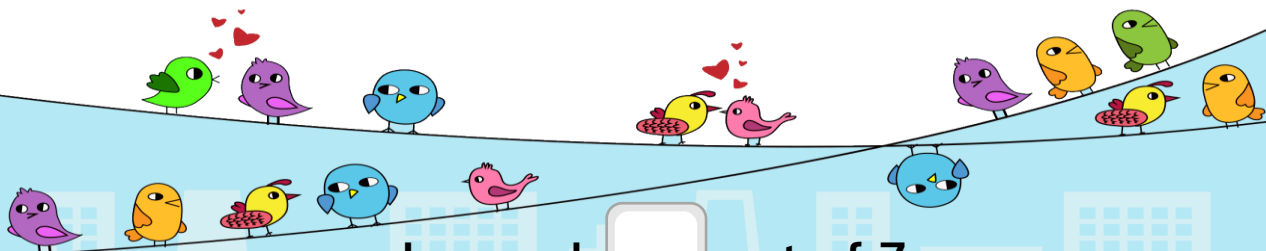
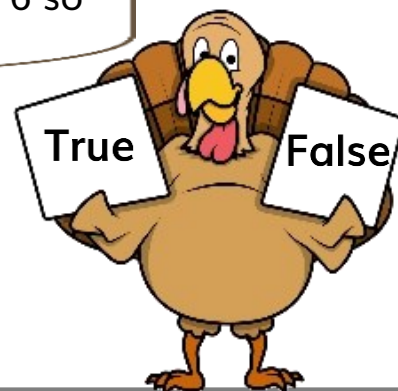
7

Sonia says,



The big hand is pointing to the 12 and the small hand is pointing to the 6 so it is 6 o'clock.

True or False. Convince me.



I scored out of 7