

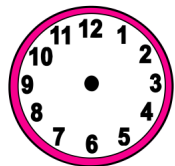
Fluency

Draw hands on the clocks to match the time.

1 Half past 4



2 Five o'clock



3 11 o'clock



4 Half past 12



Word Problem

5 Read the instructions and draw hands on the clock.

- The minute hand pointing at 6.
- The hour hand is pointing in the middle of 3 and 4.

What time is it?



6 R

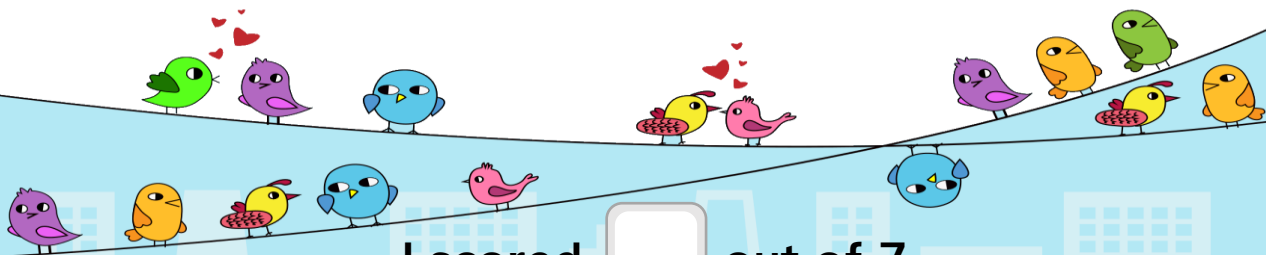
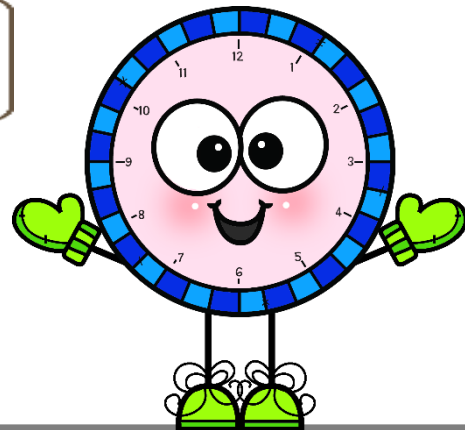
Reasoning

7 Kim says,



Only at 12 o'clock both minute hand and hour hand are on the same number.

Is Kim correct? How do you know?



I scored out of 7