

## Fluency

Tick the time that matches the clock.

1

5 o'clock

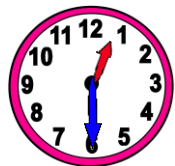
11 o'clock



2

Half past 12

Half past 1



3

Half past 4

Half past 6



4

11 o'clock

12 o'clock



## Word Problem

5

Jane is baking cookies. She put the cookies in the oven an hour ago. This is the time right now.

What time did Jane put the cookies in the oven?



6

Sam goes to school between 8 o'clock and 9 o'clock. Write the time when Sam could possibly go to school.

## Reasoning

7

Jane says,



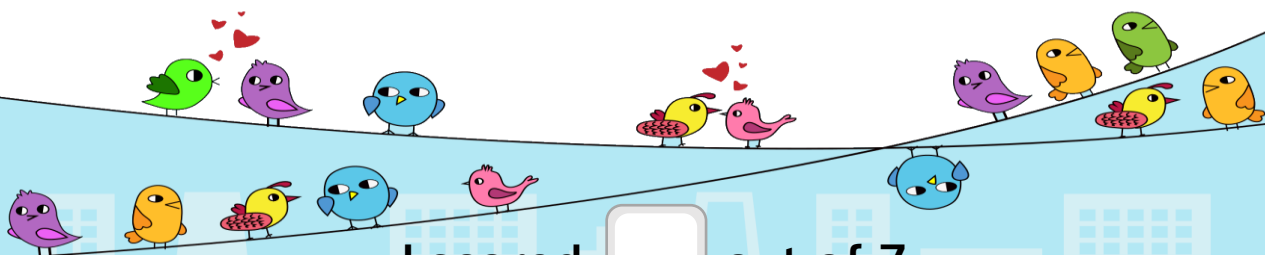
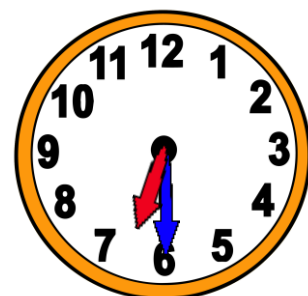
Its half past 6

Which answer is correct?

Josh says,



Its half past seven



I scored  out of 7