

Fluency

1 Describe the turns. Write quarter turn, half turn, three-quarter turn or full turn.

- The minute hand moves from 12 to 3. This is a _____
- The minute hand moves from 12 to 6. This is a _____
- The minute hand moves from 12 to 9. This is a _____

2 Tick the correct answer.

a. Which way do clock hands move?

 clockwise

 anti-clockwise

b. A quarter turn clockwise from North is facing

 east

 west

 south

Word Problem

3 Aisha faces the whiteboard. She makes a half turn. What is she facing now? Then she makes a quarter turn clockwise.

After the half turn, she faces: _____

After the quarter turn she faces: _____

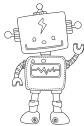


4 A robot is facing right →. It makes a quarter turn clockwise. Which direction is it facing now?

 up

 down

 left

 right


The robot is now facing _____

Reasoning

5 Who is correct and why?

Ben says: "A half turn clockwise and a half turn anti-clockwise end up facing the same way." Mia says: "No, they are different because the directions are different."

Is Ben correct? Explain your answer.

